

Water Framework Directive

On going project

EU Life project AGWAPLAN

Aims to facilitate **practical implementation** of the Water Framework Directive at farmers level by:

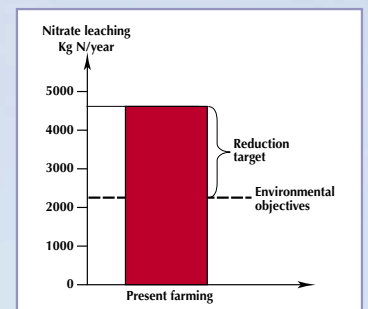
- determination of the reductions needed to attain the **environmental objectives**
- developing a new **integrated agricultural advisory service** including environmental issues
- reducing the agricultural input of N and P through **optimized agricultural practice**
- The farmers will show how they can achieve the environmental objectives in **practice** through **voluntary** agreements

Integrated agricultural advisory service

- Agricultural advice incorporating environmental aspects on an equal footing with economic aspects through broad collaboration between the project partners
- Decision Support Systems: WEB-tools with environmental-, economic- and GIS-data at field-level
- Sociological studies have been carried out of barriers hindering cooperation and mutual understanding among the partners and among the farmers to implement necessary changes in practice. The studies are used in designing the integrated agricultural advisory service

Environmental objectives

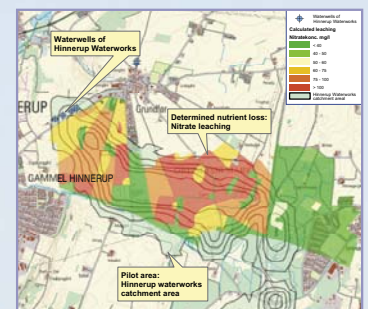
If input of N or P to a catchment area exceeds the environmental objective, a reduction target will be established.



Reduction target.

Example: Hinnerup Waterworks pilot area (363 ha catchment area)

The environmental objective of 50 mg nitrate/l (drinking-water quality standard) corresponds to a total acceptable leaching of 4,520 kg N from the catchment area.



Hinnerup Waterworks pilot area.

Input of N to the area is determined to 7,074 kg N, using "Daisy", a dynamic numerical leaching model.

Reduction target has thus been set at 2,663 kg N (7,074 - 4,520 kg N).

This target serves as the basis for the subsequent integrated agricultural advice to the farmers.

Agricultural and Environmental sector working together

Cooperation

- ▶ Agricultural, Environmental and Science Sector working together

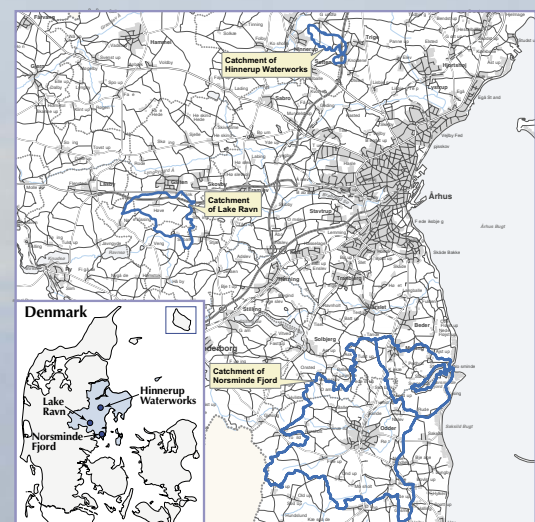


including 22 farmers from the 3 pilot areas, who are partners in the project

- ▶ The project runs from 2005 to 2008
- ▶ The budget is 15 mio. D. kr. (2 mio. Euro)
- ▶ More information on www.agwaplan.dk

Tested in 3 pilot areas

- ▶ Appropriate methods of attaining the objectives are tested in practice
- ▶ Effects of optimized agricultural practise are assessed and monitored



3 pilot areas (2 catchments of surface water and 1 of groundwater).

